

Methodist College Preparatory Department

Downey House and Fullerton House Annual Prospectus 2021 - 2022



Beginning
the journey
to **excellence**



Contents

- 3 Welcome
- 4 Our School Day
- 6 Aims and Values
- 8 What makes our school unique?
- 10 Preschool
- 11 Preparatory Curriculum
- 12 Academic Excellence

- 13 Pastoral Care
- 14 Specialist Teaching
- 16 Extra-Curricular
- 17 Wrap Around Care
- 18 Fees
- 19 How to Apply
- 20 Contact us





Welcome

At Methodist College we provide a choice of two preparatory departments; Downey House and Fullerton House, each with their own preschool. Both schools are steeped in history and have been educating children for over one hundred years.

We are a non-denominational and co-educational preparatory department, for children aged 3 – 11. We excel at providing a diverse and inclusive learning environment.

Why choose Downey House or Fullerton House?

At Downey House and Fullerton House we pride ourselves on our welcoming, caring and friendly atmosphere, where each child has access to a range of opportunities and enhanced learning experiences. Our dedicated and experienced staff work hard to create a nurturing environment where each child is encouraged and challenged to be the best that they can be.

Small class sizes, academic excellence, specialist teaching, learning support and excellent pastoral care ensure that your child receives an outstanding education in a rewarding environment which they truly enjoy. We are proud of our happy, bright, confident children who move onto secondary education confident in their abilities and skills.

We understand that choosing the right school for your child is difficult and one of the best ways to help that process is to visit the school for yourself. We welcome prospective parents to contact us to arrange an individual tour of the school.

We look forward to hearing from you.

Alan Jennings
Head of MCB Preparatory Department



Our School Day

Preparatory Department

Our school day starts at 8.30am with registration taking place between 8.30am – 8.45am. Morning break takes place at 9.45am in Downey House and 10.15am in Fullerton House and lunch is between 12 – 1pm.

School meals are available at a cost of £2.60 per day or children may bring a packed lunch if they wish.

P1 – P3 pupils finish at 2.30pm and pupils in P4 – P7 finish at 3pm.

Preschool

The preschool day starts at 8.30am. Morning snack takes place from 9.15am – 10am followed by outdoor play. Lunch is between 11.45am – 12.15pm, children can either have a packed lunch or school meals. Pick up is at 1pm.

We also provide a full wrap around care service for both preschool and prep children which you can read on page 17.



Autumn Term	26 August 2021 – 17 December 2021
Half Term	25 October 2021 – 29 October 2021
Spring Term	3 January 2022 – 7 April 2022
Half Term	14 February 2022 – 18 February 2022
Summer Term	25 April 2022 – 30 June 2022
May Day Holiday	2 May 2022
Platinum Jubilee Holiday	3 June 2022



What has amazed me is the diversity within the school, they regularly learn about different cultures and nationalities. The small class sizes provide a 'family feel' with pastoral care being a priority within the school."
Kerry McCloy, Fullerton House Parent



"When we toured the school we were very impressed with the articulate, polite, confident and happy pupils. The grounds are quite amazing and it's great to see the children being able to play in so much green space. Downey's small class sizes create an environment where the children all know each other and play amongst year groups; there's a real family feel to the school."
Michael & Susan McNeill, Downey House parents.



Aims and Values

We aim to provide a holistic approach to learning where not only are the children's educational requirements met but also their physical, social and emotional needs too, this is underpinned by our core values of Opportunity, Diversity and Excellence.



Opportunity



Every child at Downey House and Fullerton House has access to a range of opportunities ensuring they learn in a safe, secure and happy environment. Our small class sizes allow teachers to provide tailored and individual support.

Children gain a deeper learning experience through the provision of specialist teachers in Drama, Languages, Music, PE & Games, swimming and Learning Support. Classroom learning is also supplemented by the use of the outside environment in the school grounds, educational visits and residential.

Diversity



We are a co-educational, non-denominational school, which welcomes children of all backgrounds irrespective of race, nationality or religion. We pride ourselves on providing a diverse and inclusive learning environment.

We believe that children develop cognitively, emotionally and physically at different speeds depending on the individual child. Due to our small class sizes we are able to adapt teaching strategies and be flexible in our approach and ensure each child reaches their full potential.

Excellence



We believe that every child has the capability to achieve excellent results. For some this can be measured academically, for others it might be on the stage, in music or in sport. For others excellence is measured in terms of progress and development.

The array of opportunities on offer at Downey House and Fullerton House ensures each child is encouraged and challenged to be the best that they can be.





What makes our school unique?

We believe that at Downey House and Fullerton House we can provide a unique educational experience where your child will develop a love of learning in a happy, safe and encouraging environment.

Co-educational learning

We are the only co-educational preparatory school in the East and South Belfast areas.

Small class sizes

There is a maximum of 24 pupils in each class, which means that teachers have more time to spend with each child giving them the attention they need to flourish.

Academic excellence

We have an excellent reputation for our academic high standards. In both 2019/2020 and 2020/2021*, all our P7 pupils transferred to their grammar school of choice with 97% transferring to Methodist College.

Non-denominational and inclusive

We welcome children of all backgrounds irrespective of race, nationality or religion. Children flourish in a diverse and inclusive educational setting.

Specialist teaching

Our children benefit from a range of specialist teachers in Drama, Languages, Music, PE & Games and Swimming.

Learning support

Our learning support specialist teacher provides assistance to children that may require and benefit from additional curriculum support.

Wrap around care

We recognise the needs of working parents and therefore we provide support with a comprehensive wrap around care service.

Location

Both schools are located in convenient and easy to reach locations. Downey House is situated on a 40-acre site on Methody's playing fields in East Belfast, near the Ravenhill Road. Fullerton House is located on the Methody campus, adjacent to the Lisburn Road in South Belfast.

Pastoral care

This is of the utmost importance within the school and we pride ourselves on the exceptional levels of pastoral care that we provide.

Extra-curricular

We aim to provide a fulfilling and enjoyable educational experience with our wide range of extra-curricular activities from table tennis to drama and athletics to scripture union and much more...

Preschool

We provide a preschool facility on both sites for children from the age of 3. We have excellent indoor and outside space for children to learn through play.

Our children

We pride ourselves on our caring school community and family-ethos. Our children are happy, bright and confident and enjoy learning and making friendships within such a positive environment.

*2021 no AQE examinations due to COVID-19.



Preschool

Our preschool welcomes children from the age of 3 and provides a safe, stimulating and happy environment, where children build a solid foundation for their own unique social, physical and intellectual development.

We believe that children learn best through play, which is structured and observed by our experienced staff to ensure continued learning progression.

Both sites have excellent indoor space with a designated messy area, quiet room and role play corner. The children have access to well-equipped outdoor areas with a climbing frame, bicycle area and garden area. Both sites have access to the Downey House or Fullerton House prep facilities as required. As a result, we provide an excellent learning environment for your child, both indoors and out.

By attending our preschool we find children have a seamless transition to P1 and are fully supported on their educational journey.





Preparatory Curriculum

Our exceptional teaching staff deliver the key areas of learning within the NI curriculum to a high standard in order to give our pupils the skills, knowledge and understanding that will enable them to be thriving lifelong learners.

In Foundation and Key Stage 1 (P1 - P4) we use Learning through Play as our approach which provides a happy, stimulating and encouraging environment.

Literacy and Numeracy development is encouraged in a way that the children find enjoyable and practical but that enables them to create solid foundations as they move through the school.

Pupils in Key Stage 2 have their learning deepened and enhanced to solidify their education before transferring to secondary education.



Areas of Learning



The arts



Language and literacy



Mathematics and numeracy



Religious education



Physical development and movement



Personal development and mutual understanding



The world around us



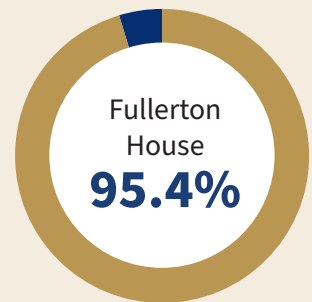
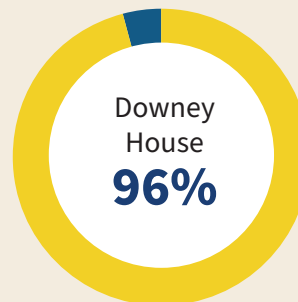
Academic Excellence



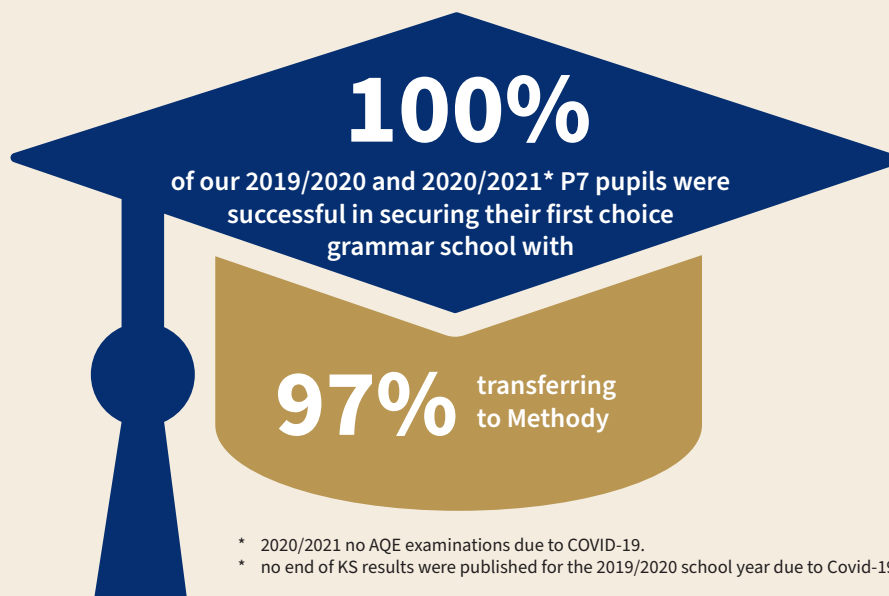
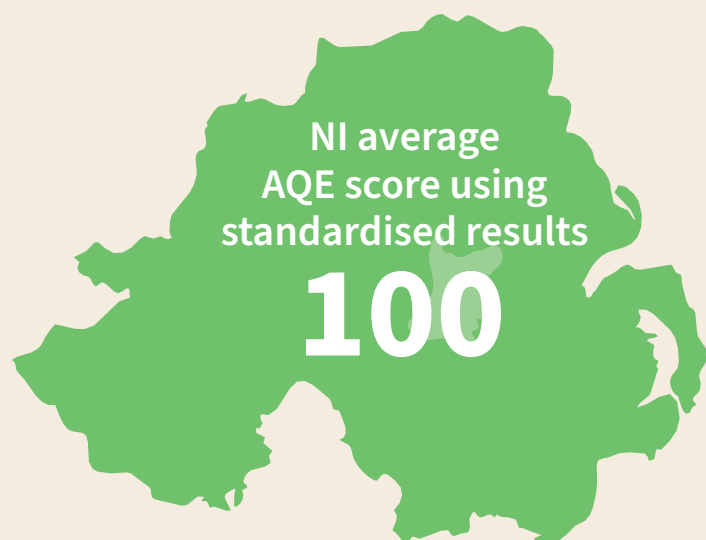
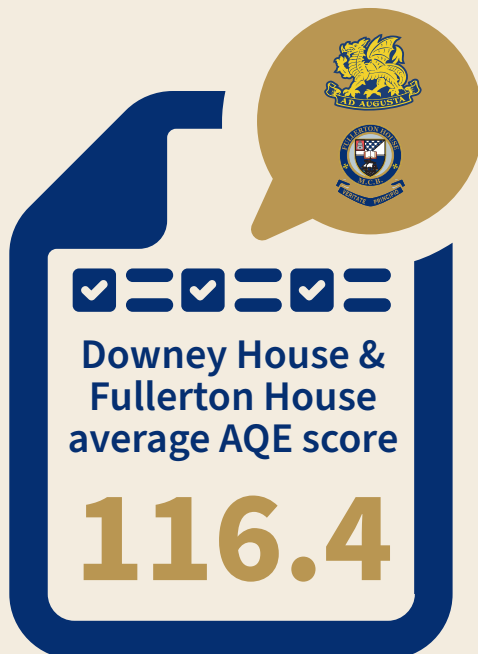
Number of pupils 2020/2021



Attendance rate 2019/2021



AQE Scores 2019/2020



* 2020/2021 no AQE examinations due to COVID-19.

* no end of KS results were published for the 2019/2020 school year due to Covid-19.



Pastoral Care

This is of the utmost importance within the preparatory department and we pride ourselves on our excellent levels of pastoral care.

We have created and maintained a happy, safe and secure learning environment for all children and staff, which is vital for all parts of the school community to learn and function effectively.

We have co-ordinators responsible for both Child Protection and Pastoral Care issues. The Pastoral Care teacher administers and monitors the Addressing Bullying and Positive Behaviour Policies. This includes ensuring that pastoral and bullying concerns are noted by members

of staff who either witness or have issues reported to them by pupils, parents or other members of staff. The Preparatory Department wholeheartedly supports the Northern Ireland Anti-Bullying Federation's anti-bullying policies and practices.

Circle time and other PDMU strategies are used by staff to promote positive behaviour, team-work and conflict resolution in classes. Assemblies are used to support these messages and to address issues which may arise at a whole school level e.g. a serious accident to a pupil, a case of bullying or a bereavement of a member of the school community.

Effective supervision is a key area for preventing child protection issues. This is frequently reviewed at meetings of staff at whole school, Key Stage and Senior Management Team levels.





Specialist Teaching

At Downey House and Fullerton House children are taught by specialist teachers who help them to flourish, develop life experiences and provide opportunities to succeed in whatever they do. Children have access to specialist teachers in the following subjects; Drama, Languages, Music, PE & Games, Swimming and learning support.



Learning support provision

We recognise that every child is an individual. This means that from time to time they may require and benefit from additional curriculum support to help them overcome specific learning difficulties.

The Learning Support teacher assists individual children and small groups to overcome the difficulties they are experiencing with their learning, whether short term or for extended periods. Using a range of strategies and resources we encourage the children to develop self-confidence and independence in their work, to reach their full potential.

Individual music tuition

Tuition in string, piano, brass and other wind instruments is available by private arrangement. The school has its own choir (P5 - P7), recorder group (P6 - P7) and orchestra (P4 - P7).

PE & Games

Our PE and Games programme is extensive and an integral part of school life. Our specialist staff deliver the four aspects of the physical education curriculum of games, swimming, gymnastics and dance throughout the school. We encourage and support all pupils to achieve excellence, with almost all senior pupils having the opportunity to represent their school in one field or another.

The children have access to an extensive range of outdoor equipment, a swimming pool at the Methody campus and 40 acres of playing fields at our Pirrie Park site.

High quality coaching is provided in a range of sports including; athletics, cricket, cross-country, football, hockey, netball and rugby.





Extra-curricular

We aim to provide a fulfilling and enjoyable educational experience with our wide range of extra-curricular activities.

Combined with our curriculum these clubs and activities provide a balanced education that create confidence and expertise and teach children to work well within a team or group setting. The children have the opportunity to participate in a range of activities which complements the learning within the classroom. We provide a range of clubs and activities including:

Athletics	Football	Recorder Group
Ballet*	Green Room	Rugby
Choir	Hockey	Scripture Union
Creative Club	Judo*	Table Tennis*
Cricket	Music	Tennis*
Cross-country	Netball	Tufty
Drama Club	Orchestra	Singing Club



*an extra charge is necessary as outside coaches are employed.



Wrap Around Care

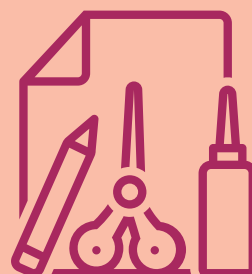
We recognise the needs of working parents and therefore we provide a comprehensive wrap around care service.

We offer Breakfast Club from 8am and After School Club from 2.30pm – 5.30pm. To assist parents with younger children we also provide an After School Club for our Preschool from 1pm – 5.30pm.

For parents with children that finish at 2.30pm and 3pm we offer a waiting room for the younger child (P1 - P3) so that you only have to do one school pick up.

Each After Schools Club has its own room where children meet and are able to participate in a variety of activities including art and craft, games and simple cooking. The after school team includes a dedicated After School Club supervisor and one or two assistants.

In addition to the activities in the club rooms, children are able to complete their homework in other classrooms. They can also make use of the gym or play outside.





Fees

Preparatory Department Fees, Charges & Contributions

Capital Fee	£140
Tuition Fee	£5,600*
Discount from Tuition Fee for Second Sibling	less 5%
Discount from Tuition Fee for Third Sibling	less 10%
Discount from Tuition Fee for Fourth and Successive Siblings	less 25%

After School Club Fees

3pm - 4pm	£8.50
3pm - 5.30pm	£17.00

* If payment for fees is not received in full or by direct debit by 31 October of the academic year then the tuition fee will be £6,000.

Preschool Department Fees

Preschool fee – 8.30am – 1pm	£21 per day
Preschool Breakfast Club – from 8am	£3 per day
Preschool After School Club – 1pm – 3pm	£10 per day
Preschool After School Club – 1pm – 5.30pm	£20 per day





How to Apply

Our academic year begins in September each year. We accept applications throughout the year, dependent on places being available. Applications for P1 places open in September for entry in the following academic year.

We realise there is no better way to find out more about a school than seeing for yourself. We would love to show you around our wonderful school, please get in touch and we will be happy to arrange a tour or answer any questions you may have. You can contact us by email, phone or visit our website to complete an online application form:

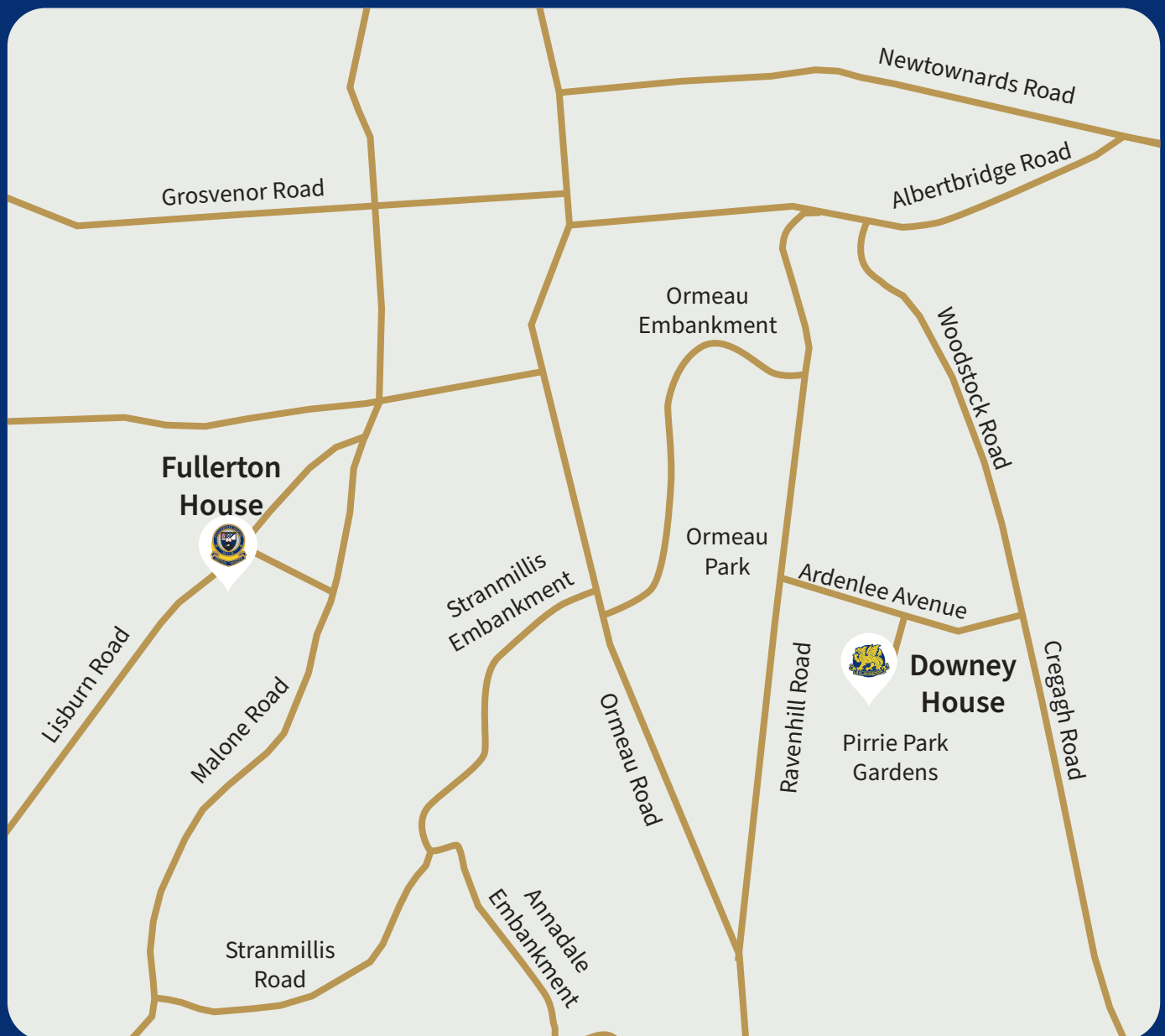


Downey House
02890 286660
info@downeyhouseprep.org
www.downeyhouseprep.org



Fullerton House
02890 205217
info@fullertonhouseprep.org
www.fullertonhouseprep.org

Contact us



Downey House
Pirrie Park Gardens
Belfast
BT6 0AG
02890 286660
info@downeyhouseprep.org
www.downeyhouseprep.org
 [mcbdowney](https://www.facebook.com/mcbdowney)
 [@mcbdowney](https://twitter.com/mcbdowney)



Fullerton House
1 Malone Road
Belfast
BT9 6BY
02890 205217
info@fullertonhouseprep.org
www.fullertonhouseprep.org
 [fullertonmcb](https://www.facebook.com/fullertonmcb)
 [@mcbfullerton](https://twitter.com/mcbfullerton)