

Provisional 2015 Results for MCB

The following tables show the percentage of presentations achieving each grade.

A2

%	A*	A*A	A*B	A-C
UK	8.2	25.9	52.8	77.3
NI	7.6	29.3	59.7	83.0
MCB	15.0	42.4	72.1	88.1

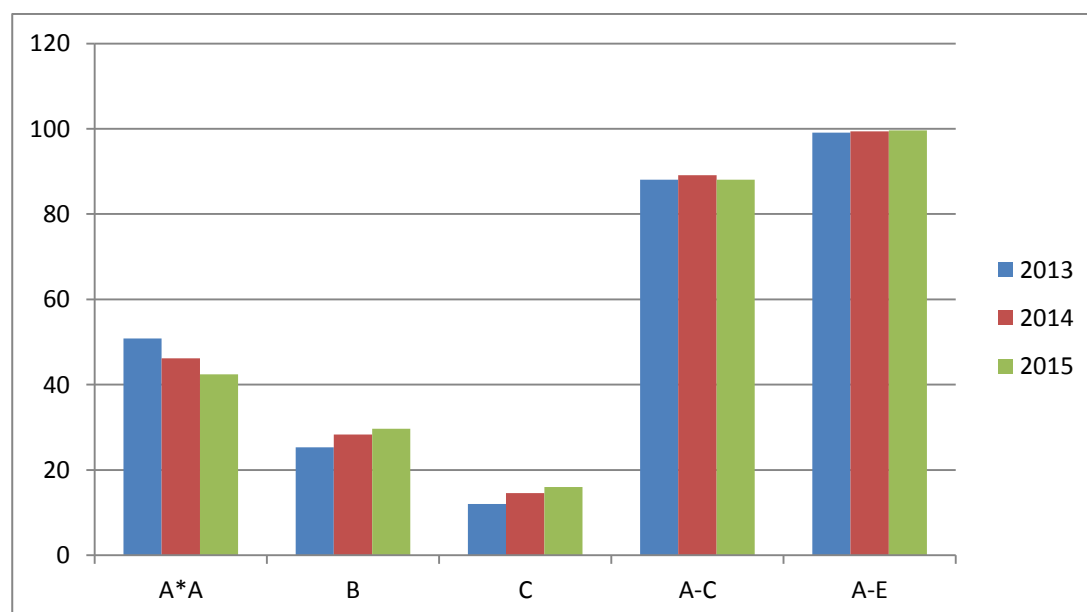
2015: 60 pupils achieved 3+A*A (23.5% of the year group). 10 pupils achieved 3+A*

2014: 58 pupils (25.5% of the year group) achieved 3A*A+. 10 pupils achieved 3+A*

2013: 97 pupils (34.3% of the year group) achieved 3A*A+. 20 pupils achieved 3+A*

A2 Historical Comparison

	2013	2014	2015
A*	18.7	15.2	15.0
A(A*)	50.4	46.2	42.4
B	25.0	28.3	29.7
C	11.9	14.6	16.0
A-C	87.3	89.1	88.1
A-E	98.5	99.4	99.6
3+A*	7.1	4.4	3.9
3+A*A	34.3	25.6	23.5
3+A*B	59.7	55.5	48.2
3+A*C	74.2	74.0	69.4



AS Level

%	A	A-B	A-C	A-E
UK	20.2	40.9	62.6	89.4
NI	27.2	53.9	75.8	94.8
MCB	33.6	57.5	77.5	96.1

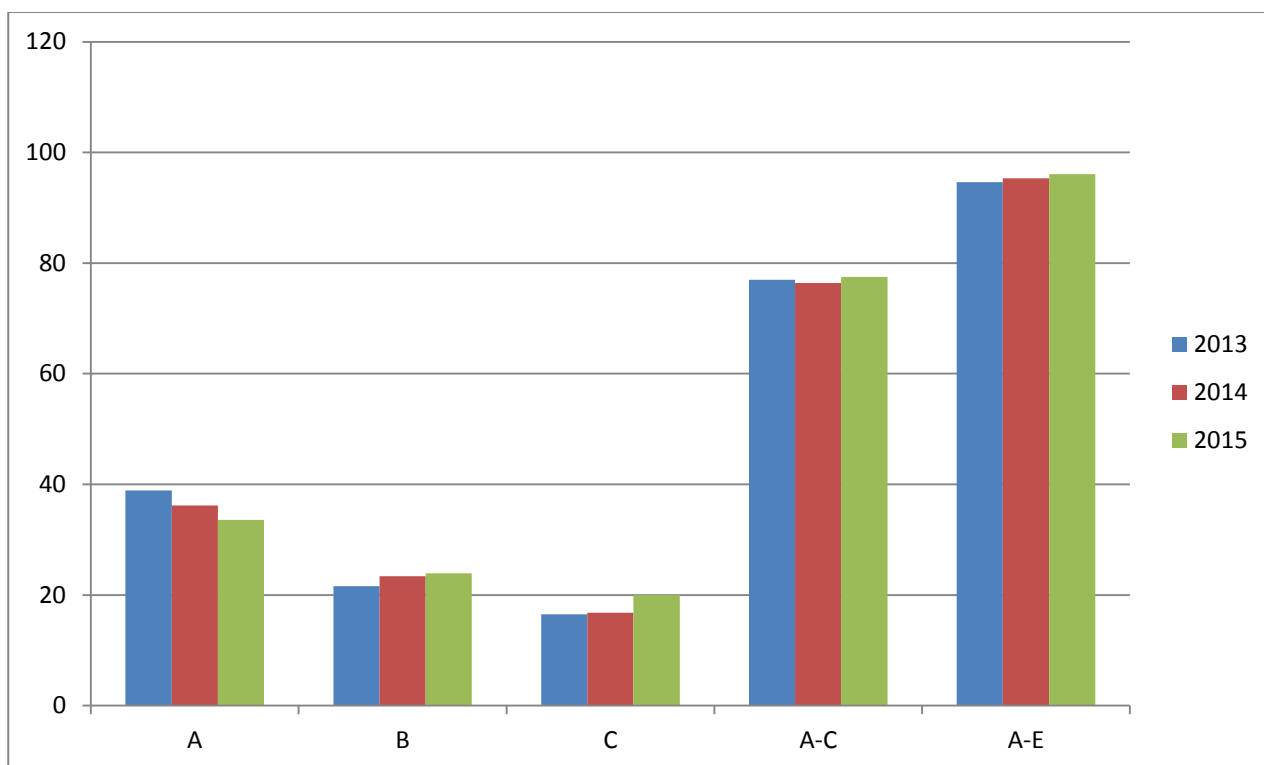
2015: 26 pupils achieved 4 A passes = 9.5% of the year group
 58 pupils achieved 3+A passes = 21.2% of the year group

2014: 36 pupils achieved 4 A passes = 13.04% of the year group
 61 pupils achieve 3+ A passes = 22.1%

2013: 34 Pupils achieved 4A passes = 14.1% of the year group
 67 pupils achieved 3A+ passes = 27.8 % of the year group

AS Level Historical Comparison

	2013	2014	2015
A	38.9	36.2	33.6
B	21.6	23.4	23.9
C	16.5	16.8	20.0
A-C	77.0	76.4	77.5
A-E	94.6	95.3	96.1



GCSE Level

%	A*	A*A	A*-B	A*-C	A*-D	A*-E	A*-G
UK	6.6	21.2	43.3	69.0	85.4	93.0	98.1
NI	9.0	28.6	54.4	78.7	90.4	95.6	99.2
MCB	23.8	55.3	83.1	96.1	98.8	100	100

GCSE Level Historical Comparison

	2013	2014	2015
A*	24.8	20.2	23.8
A	34.6	32.8	31.5
B	27.3	28.3	27.8
C	10.8	14.3	13.0
A*A	59.4	52.8	55.3
A*-B	86.7	81.1	83.1
A*-C	97.5	95.4	96.1
5+ A*-C	98.8	98.0	98.8
7+ A*-C	97.6	94.8	95.6
7+A*A	50.0	40.6	45.6
10+A*A	19.0	11.6	20.4

