

Methodist College Exam Results Report

2018

CONTENTS

Information	Page
Overview	1-2
GCSE Grading Changes Explained	2
A2 % Local and National Presentations	3
A2 Historical Comparison	3
A2 Pupil Performance including gender analysis	4
A2 L6 intake analysis	4
A2 % of Presentations by Subject	5
AS % Local and National Presentations	6
AS Historical Comparison	6
AS Pupil Performance including gender analysis	7
AS % of Presentations by Subject	8
GCSE % Local and National Presentations	9
GCSE Historical Comparison	9
GCSE Pupil Performance including gender analysis	10
GCSE % of Presentations by Subject	11
Development Plan Summary	12

“There is no single ingredient for a grade 9, but historically independent schools have developed a winning formula that stretches all pupils and allows the brightest to achieve the best. This includes highly qualified staff teaching in ways that maximize each child’s achievement, extra-curricular and character education, a culture of high aspirations and positive peer groups in which it is cool to work hard and succeed.”

Ed Elliott, Head of The Perse School and Chair of HMC’s Exams Task Group.

Overview of 2018 Results

A2

The performance of this cohort significantly exceeded the predicted outcomes based on GCSE and A level performance. The aspirational targets in the table below were set deliberately high to provide them with a driver. The fact that the 3A*A pass rate was achieved and the 3A*C is within 3.6% of the aspirational target (and over 10% higher than predicted) is commendable. This is a strong performance from this cohort, especially from those pupils at the D/C interface. There is an indication that those who received unconditional offers in advance of the exams underperformed in some subjects because they didn't really have to try. Overall though, we are very pleased with the outcome for this year group.

	3A*A	3A*B	3A*C
Predicted	20%	48%	66%
Aspirational	25%	60%	80%
Actual	24.8%	52%	76.4%

AS

The statistics for this year group are limited to the percentage of presentations, due to the increased number of linear candidates who have not sat the AS. It is also important to note that for this year group the AS score for CCEA subjects will only account for 40% of the final A Level mark.

	A	A-B	A-C	A-E
2017	33.2	57.9	78.0	96.5
2018	44.0	68.1	86.3	98.3
	+10.8	+10.2	+8.3	+1.8

The improvement on the A, AB, AC pass rates augur well for the results this year, and the pupils have been set the challenge of achieving the best set of A Level results ever recorded by the College.

GCSE

This is the first year of pupils receiving a mixture of letter and number grades. The A*A/7 statistic of 60.3% compares very favourably with the national, local and HMC outcomes, being triple, double and equal respectively. As a cohort, they performed in line with the high targets set for them.

	AS Result	A2 Target
3+A*A	25.1%	30%
3+A*B	41.1%	60%
3+A*C	58.9%	80%

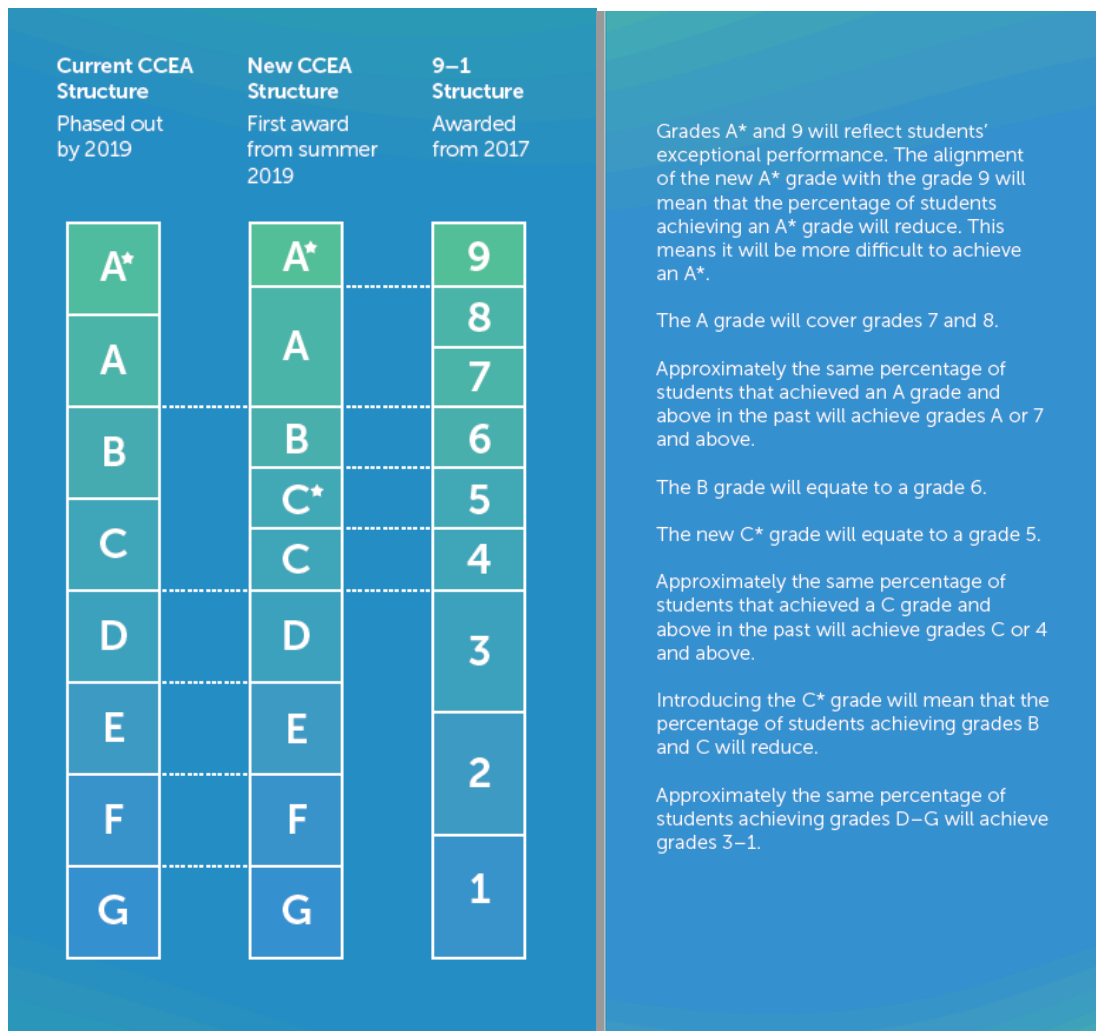
For the first time ever, **every** pupil in the cohort achieved an A*-C pass in English Language, English Literature and Maths.

Drama, German, Latin and Spanish pupils were awarded numerical. 23.9% of presentations achieved the grade 9. This is 3.4% higher than the HMC average, almost four times the NI average and five and half times the UK average.

The girls achieved very impressive results, with 2/3 achieving 7A*A passes; putting them ahead of the Belfast girls' schools.

This cohort had an average AQE score of 111 and achieved an average GCSE score of 26 points (or an A*AB profile, with half the qualifications being A*A and half B). They performed in line with the high targets set for them.

GCSE Comparative table showing the current structure and the change that is being introduced this year.



Grade 9 is the highest grade and will be awarded to fewer students than the old A*.

The old and new GCSE grading scales do not directly compare but there are three points where they align, as the diagram shows:

- The bottom of grade 7 is aligned with the bottom of grade A;
- The bottom of grade 4 is aligned with the bottom of grade C; and
- The bottom of grade 1 is aligned with the bottom of grade G.

The Department for Education recognises grade 4 and above as a 'standard pass' in all subjects. A grade 4 or above marks a similar achievement to the old grade C or above.

Employers, universities and colleges will continue to set the GCSE grades they require for entry to employment or further study. The Department of Education is saying to them that if they previously set grade C as their minimum requirement, then the nearest equivalent is grade 4. The old A* to G grades will remain valid for future employment or study.

A2 Level

The following tables show the percentage of presentations achieving each grade.

A2

%	A*	A*A	A*B	A-C
UK	8.0	26.4	53.0	77.0
NI	8.2	30.4	61.5	84.5
MCB	13.4	40.2	71.9	89.6

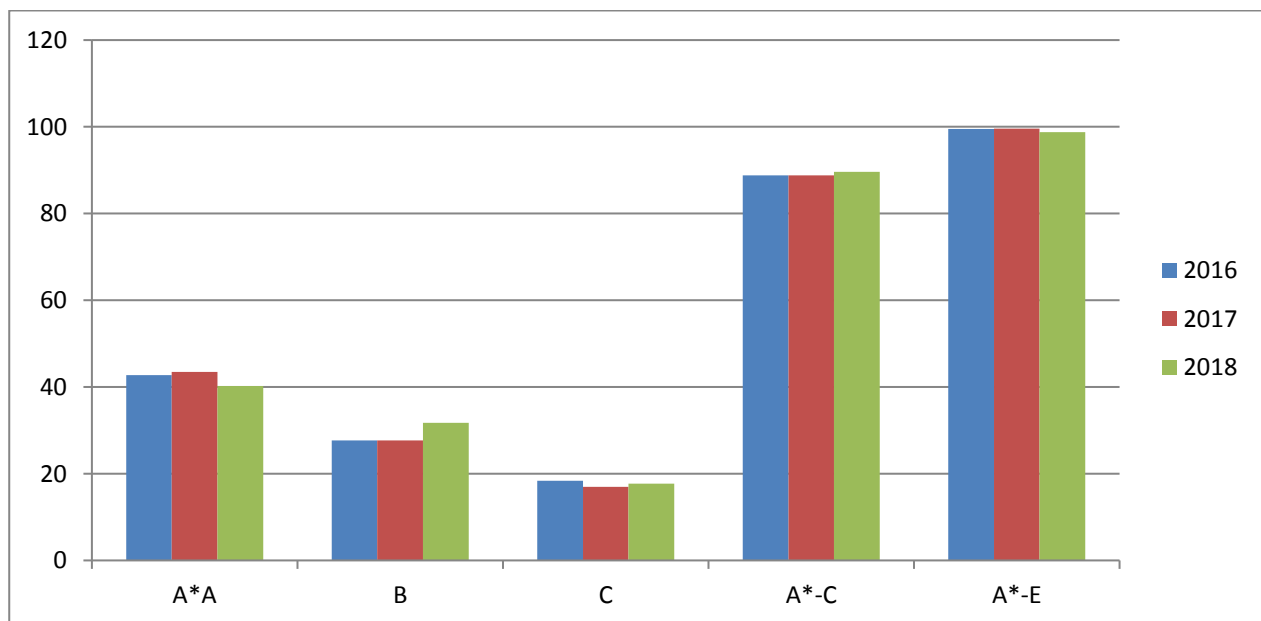
2018: 63 pupils achieved 3+A*A (24.8% of the year group). 12 pupils achieved 3+A*

2017: 61 pupils achieved 3+A*A (24.8% of the year group). 15 pupil achieved 3+A*

2016: 55 pupils achieved 3+A*A (21.6% of the year group). 4 pupils achieved 3+A*

A2 Historical Comparison

	2016	2017	2018	Target
A*	10.3	16.0	13.4	
A(A*)	42.7	43.6	40.2	
B	27.7	32.7	31.7	
C	18.4	16.9	17.7	
A*-C	88.8	93.2	89.6	
A*-E	99.5	99.5	98.8	
3+A*	1.6	6.1	4.7	
3+A*A	21.6	24.8	24.8	25
3+A*B	49.8	60.2	52.0	60
3+A*C	69.4	82.9	76.4	80



Distribution of A2 Grades

	A*	A	B	C	D	E	U	Total
All pupils	104	208	248	138	47	25	10	780
%	13.3	26.7	31.8	17.7	6.0	3.2	1.3	
Boys	42	89	149	92	32	15	9	428
%	9.8	20.8	34.8	21.5	7.5	3.5	2.1	
Girls	62	119	99	46	15	10	1	352
%	17.6	33.8	28.1	13.1	4.3	2.8	0.3	

Levels of Attainment by Gender

	3+ A*	2+ A*	4+ A*/A	3+ A*/A	3+ A*/B	3+ A*-C	3+ A*-E	2+ A*-E	total
all pupils	12	31	10	63	134	197	244	253	257
%	4.7	12.1	3.9	24.5	52.1	76.7	94.9	98.4	
no of boys	7	12	5	22	62	103	131	138	142
%	4.9	8.5	3.5	15.5	43.7	72.5	92.3	97.2	55.3
no. of girls	5	19	5	41	72	94	113	115	115
%	4.3	16.5	4.3	35.7	62.6	81.7	98.3	100.0	44.7

A2 2018: Comparison of the % of grades achieved by the L6 intake pupils.

	A*	A	B	C	D	E	U	Total	3+A*-C
Cohort	104	208	248	138	47	25	10	780	197/257
%	13.3	26.7	31.8	17.7	6.0	3.2	1.3		76.7%
Cum	13.3	40.0	71.8	89.5	95.5	98.7	100		
MCB	98	200	218	120	40	22	9	707	/233
%	13.9	28.3	30.8	17.0	5.6	3.1	1.3		82.5%
Cum	13.9	42.2	73.0	90.0	95.6	98.7	100		
Dif	0.6	2.2	1.2	0.5	0.1	0	0		-0.4%
L6 new	6	8	30	18	7	3	1	73	/24
%	8.2	11.0	41.1	24.7	9.6	4.1	1.3		86.2%
Cum	8.2	19.2	60.3	85.0	94.6	98.7	100		
Dif	-5.1	-20.8	-11.5	-4.5	-0.9	0	0		3.3%

Provisional Distribution of U6th A2 Grades by Subject for 2018

	A*	A	B	C	D	E	U	entries A*-E	Average score	av. Score in all subjects
Art & Design	3	3	2	1	1	0	0	10	9.20	7.93
%	30.0	30.0	20.0	10.0	10.0	0.0	0.0	100.0		
Biology	12	25	26	17	3	1	1	85	8.45	8.64
%	14.1	29.4	30.6	20.0	3.5	1.2	1.2	98.8		
Business Studies	4	15	25	8	2	0	0	54	8.41	8.05
%	7.4	27.8	46.3	14.8	3.7	0.0	0.0	100.0		
Chemistry	11	23	15	10	5	1	0	65	8.68	9.24
%	16.9	35.4	23.1	15.4	7.7	1.5	0.0	100.0		
Classical Civilisation	0	3	4	3	1	0	0	11	7.64	7.33
%	0.0	27.3	36.4	27.3	9.1	0.0	0.0	100.0		
Computer Studies	1	1	3	3	3	0	0	11	6.91	8.00
%	9.1	9.1	27.3	27.3	27.3	0.0	0.0	100.0		
Design and Tech.	1	1	8	2	2	0	0	14	7.57	6.39
%	7.1	7.1	57.1	14.3	14.3	0.0	0.0	100.0		
Drama	0	7	4	0	0	0	0	11	9.27	8.30
%	0.0	63.6	36.4	0.0	0.0	0.0	0.0	100.0		
Economics	2	5	9	7	1	1	0	25	7.76	8.05
%	8.0	20.0	36.0	28.0	4.0	4.0	0.0	100.0		
English Literature	8	8	11	6	0	1	0	34	8.88	8.33
%	23.5	23.5	32.4	17.6	0.0	2.9	0.0	100.0		
French	2	3	3	0	0	0	0	8	9.75	9.17
%	25.0	37.5	37.5	0.0	0.0	0.0	0.0	100.0		
Geography	3	6	16	13	4	2	0	44	7.32	7.55
%	6.8	13.6	36.4	29.5	9.1	4.5	0.0	100.0		
German	1	3	1	1	0	0	0	6	9.33	8.89
%	16.7	50.0	16.7	16.7	0.0	0.0	0.0	100.0		
Health & Social Care	0	1	7	1	1	0	0	10	7.60	6.55
%	0.0	10.0	70.0	10.0	10.0	0.0	0.0	100.0		
History	7	12	17	10	3	2	0	51	8.16	8.09
%	13.7	23.5	33.3	19.6	5.9	3.9	0.0	100.0		
Home Economics	0	4	2	3	0	0	0	9	8.22	7.62
%	0.0	44.4	22.2	33.3	0.0	0.0	0.0	100.0		
Information Tech.	0	1	3	3	4	0	2	13	5.23	5.68
%	0.0	7.7	23.1	23.1	30.8	0.0	15.4	84.6		
IT/Art	0	3	4	0	0	0	0	7	8.86	8.70
%	0.0	42.9	57.1	0.0	0.0	0.0	0.0	100.0		
Latin	0	0	2	1	0	0	0	3	7.33	8.80
%	0.0	0.0	66.7	33.3	0.0	0.0	0.0	100.0		
Mathematics	21	38	25	12	3	2	4	105	8.76	8.71
%	20.0	36.2	23.8	11.4	2.9	1.9	3.8	96.2		
Maths. Further	8	1	1	0	0	0	0	10	11.40	10.77
%	80.0	10.0	10.0	0.0	0.0	0.0	0.0	100.0		
Music	2	1	3	0	0	0	0	6	9.67	8.12
%	33.3	16.7	50.0	0.0	0.0	0.0	0.0	100.0		
Physics	7	10	9	8	1	8	2	45	7.20	8.54
%	15.6	22.2	20.0	17.8	2.2	17.8	4.4	95.6		
Politics	1	1	11	3	0	1	0	17	7.65	7.37
%	5.9	5.9	64.7	17.6	0.0	5.9	0.0	100.0		
Psychology	0	4	12	13	8	3	1	41	6.15	7.15
%	0.0	9.8	29.3	31.7	19.5	7.3	2.4	97.6		
Religious Studies	1	12	7	1	1	0	0	22	9.00	8.63
%	4.5	54.5	31.8	4.5	4.5	0.0	0.0	100.0		
Russian	1	2	0	0	0	0	0	3	10.67	9.33
%	33.3	66.7	0.0	0.0	0.0	0.0	0.0	100.0		
Science: Env.	2	3	5	6	3	0	0	19	7.47	6.90
%	10.5	15.8	26.3	31.6	15.8	0.0	0.0	100.0		
Science: Geology	3	1	3	2	1	2	0	12	7.50	8.05
%	25.0	8.3	25.0	16.7	8.3	16.7	0.0	100.0		
Spanish	2	9	6	2	0	0	0	19	9.16	8.85
%	10.5	47.4	31.6	10.5	0.0	0.0	0.0	100.0		
Total	103	206	244	136	47	24	10	770	8.18	
%	13.4	26.8	31.7	17.7	6.1	3.1	1.3	98.7		

AS Level

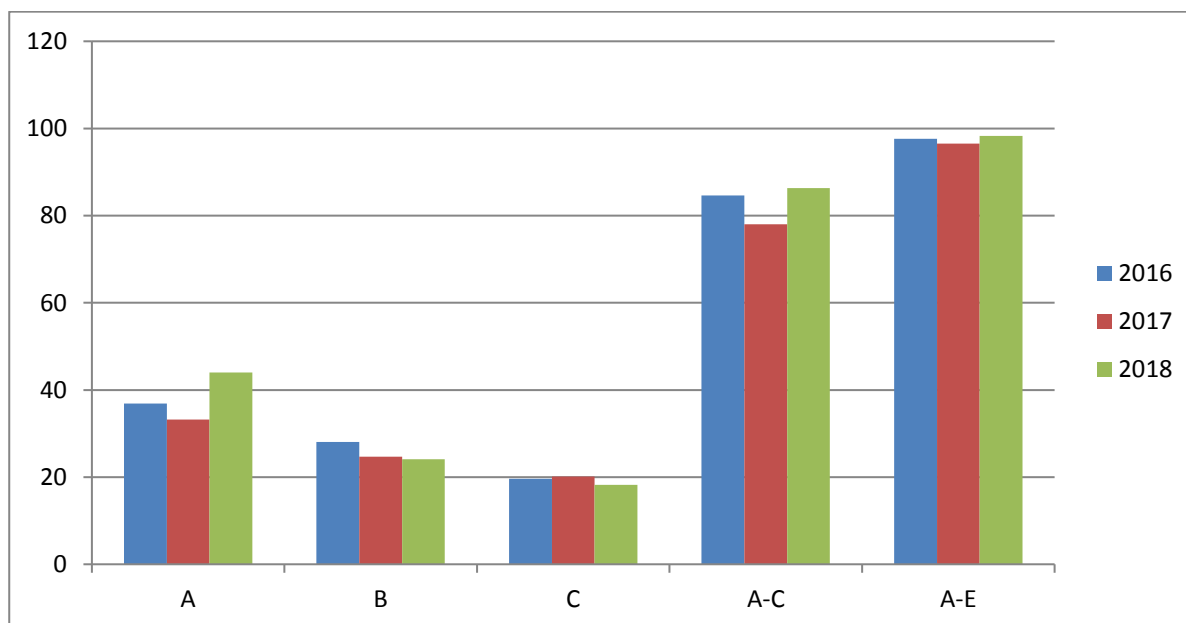
21 out of 30 A Level subjects at Methody present pupils for AS Level. In England it is a standalone exam. In NI and Wales it contributes 40% to the A Level and can be standalone. Figures from the Department for Education show that the number of entries for AS subjects fell by almost 60% from 659,880 in 2017 to 269,090 in 2018. This decline, the changed nature of the exams and the act that 1/3 of A Levels at MCB are linear, significantly reduces the reliability of comparative analysis of the AS data.

%	A	A-B	A-C	A-E
UK	27.5	47.0	66.3	90.7
NI	27.3	53.5	75.7	95.1
MCB	44.0	64.1	82.3	94.3

2018: 31 pupils achieved 4 A passes = 11.8% of year group
 66 pupils achieved 3+A passes = 25.1% of the year group
 2017: 24 pupils achieved 4 A passes = 9.2% of the year group
 49 pupils achieved 3+ A passes = 18.7% of the year group
 2016: 33 pupils achieved 4 A passes = 12.8% of the year group
 65 pupils achieved 3+A passes = 25.3% of the year group

AS Level Historical Comparison

	2016	2017	2018
A	36.9	33.2	44.0
B	28.1	24.7	24.1
C	19.6	20.1	18.2
A-C	84.6	78.0	86.3
A-E	97.6	96.5	95.8



Distribution of AS Grades

	A	B	C	D	E	U	Total
All pupils %	349 <i>44.0</i>	191 <i>24.1</i>	144 <i>18.2</i>	75 <i>9.5</i>	20 <i>2.5</i>	14 <i>1.8</i>	793
Boys %	176 <i>41.9</i>	97 <i>23.1</i>	82 <i>19.5</i>	45 <i>10.7</i>	9 <i>2.1</i>	11 <i>2.6</i>	420
Girls %	173 <i>46.4</i>	94 <i>25.2</i>	62 <i>16.6</i>	30 <i>8.0</i>	11 <i>2.9</i>	3 <i>0.8</i>	373

No of pupils and Levels of Attainment by Gender

	4+ A	3+ A	3+ A/B	3+ A-C	3+ A-E	2+ A-E	total
all pupils %	31 <i>11.8</i>	66 <i>25.1</i>	108 <i>41.1</i>	155 <i>58.9</i>	199 <i>75.7</i>	253 <i>96.2</i>	263
no of boys %	14 <i>10.1</i>	33 <i>23.7</i>	57 <i>41.0</i>	82 <i>59.0</i>	108 <i>77.7</i>	131 <i>94.2</i>	139
no. of girls %	17 <i>13.7</i>	33 <i>26.6</i>	51 <i>41.1</i>	73 <i>58.9</i>	91 <i>73.4</i>	122 <i>98.4</i>	124

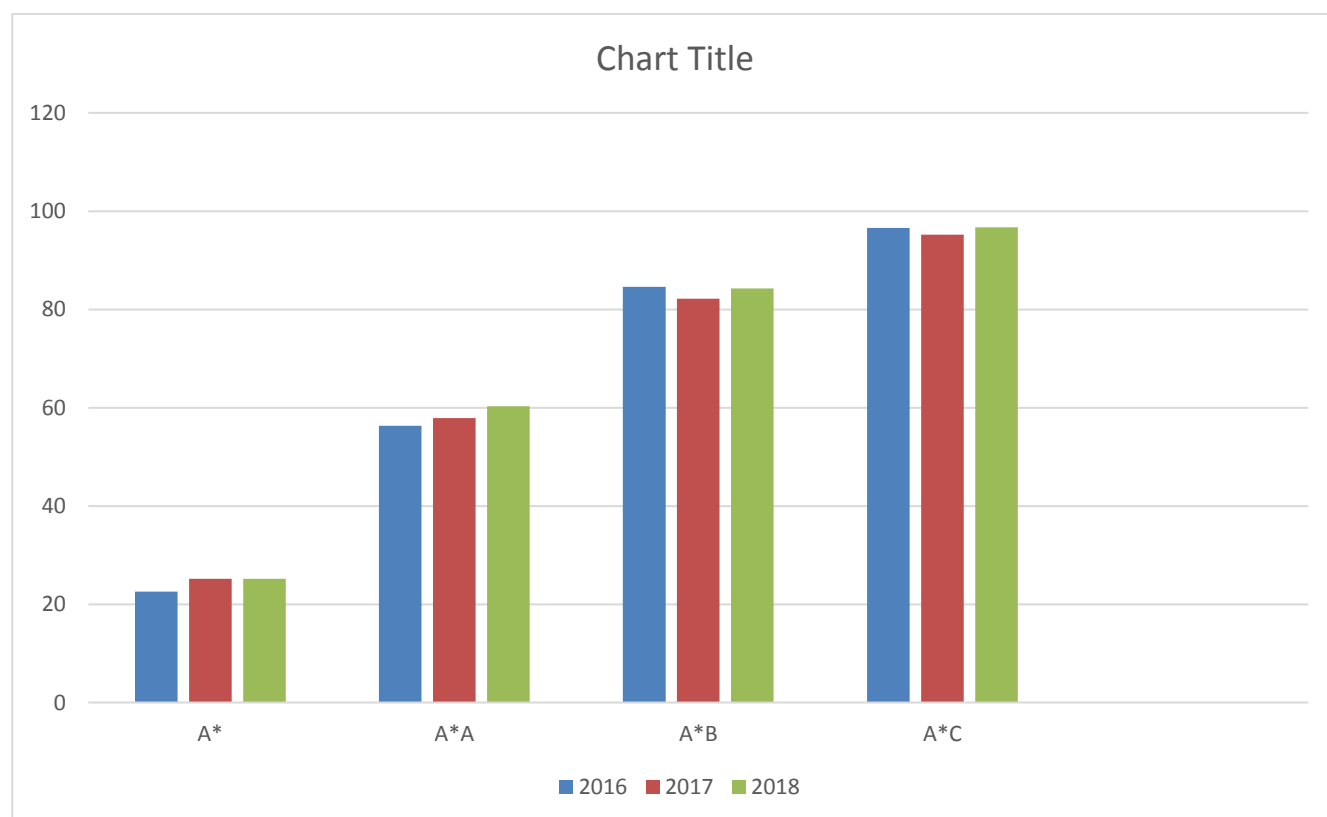
	A	B	C	D	E	U	entries A-E	Average score	av. Score in all subjects
Art & Design %	8 57.1	2 14.3	4 28.6	0 0.0	0 0.0	0 0.0	14 100.0	4.29	3.80
Biology %	46 50.0	17 18.5	15 16.3	10 10.9	4 4.3	0 0.0	92 100.0	3.99	4.17
Business Studies %	10 28.6	11 31.4	9 25.7	5 14.3	0 0.0	0 0.0	35 100.0	3.74	3.45
Chemistry %	49 48.5	19 18.8	11 10.9	11 10.9	6 5.9	5 5.0	101 95.0	3.78	4.17
Design and Tech. %	6 54.5	4 36.4	1 9.1	0 0.0	0 0.0	0 0.0	11 100.0	4.45	3.97
Economics %	14 37.8	7 18.9	6 16.2	6 16.2	3 8.1	1 2.7	37 97.3	3.54	3.86
English Literature %	19 31.1	28 45.9	8 13.1	5 8.2	1 1.6	0 0.0	61 100.0	3.97	3.92
French %	9 90.0	1 10.0	0 0.0	0 0.0	0 0.0	0 0.0	10 100.0	4.90	4.74
Geography %	20 30.8	14 21.5	18 27.7	10 15.4	2 3.1	1 1.5	65 98.5	3.57	3.74
German %	4 57.1	3 42.9	0 0.0	0 0.0	0 0.0	0 0.0	7 100.0	4.57	4.55
Health & Social Care %	1 11.1	2 22.2	3 33.3	3 33.3	0 0.0	0 0.0	9 100.0	3.11	2.86
History %	24 35.3	15 22.1	18 26.5	11 16.2	0 0.0	0 0.0	68 100.0	3.76	3.93
Home Economics %	8 47.1	5 29.4	3 17.6	0 0.0	1 5.9	0 0.0	17 100.0	4.12	3.57
IT/Art %	8 66.7	4 33.3	0 0.0	0 0.0	0 0.0	0 0.0	12 100.0	4.67	4.58
Mathematics %	67 57.8	24 20.7	16 13.8	6 5.2	1 0.9	2 1.7	116 98.3	4.24	4.22
Music %	5 83.3	1 16.7	0 0.0	0 0.0	0 0.0	0 0.0	6 100.0	4.83	4.56
Physics %	22 52.4	7 16.7	5 11.9	1 2.4	2 4.8	5 11.9	42 88.1	3.74	4.15
Politics %	17 37.0	13 28.3	14 30.4	2 4.3	0 0.0	0 0.0	46 100.0	3.98	3.95
Religious Studies %	3 15.8	7 36.8	5 26.3	4 21.1	0 0.0	0 0.0	19 100.0	3.47	3.56
Science: Env. %	4 44.4	3 33.3	2 22.2	0 0.0	0 0.0	0 0.0	9 100.0	4.22	3.40
Spanish %	5 31.3	4 25.0	6 37.5	1 6.3	0 0.0	0 0.0	16 100.0	3.81	3.73
Total %	349 44.0	191 24.1	144 18.2	75 9.5	20 2.5	14 1.8	793 98.2	3.92	

GCSE Level

%	A*	A*/A/7	A*-B	A*-C/4	A*-D	A*-E	A*-G
UK	N/A	20.5	43.5	66.9	/	/	/
NI	9.9	29.4	56.7	81.1	91.1	96.1	
MCB	25.2	60.3	84.3	96.7	99.3	99.8	100
Girls	30.8	70.4	91.1	98.4			

GCSE Level Historical Comparison

	2016	2017	2018	Target
A*	22.6	25.2	25.2	
A	33.7	32.7	35.1	
B	28.3	24.3	24.0	
C	12.0	13.0	12.4	
A*/A/7-9	56.3	57.9	60.3	60%
A*-B	84.6	82.2	84.3	85%
A*-C/4-6	96.6	95.2	96.7	
5+ A*-C	98.8	99.2	99.2	100%
7+ A*-C	96.0	93.6	96.4	
7+A*A	44.3	49.4	52.4	50%+
10+A*A	19.0	22.1	22.2	



Distribution of GCSE Grades by Gender 2018

	A*	A	B	C	D	E	F	G	U	Total
All pupils	625	869	595	307	64	12	2	1	1	2476
%	25.2	35.1	24.0	12.4	2.6	0.5	0.1	0.0	0.0	
Boys	220	348	322	211	43	11	2	1	1	1159
%	19.0	30.0	27.8	18.2	3.7	0.9	0.2	0.1	0.1	
Girls	405	521	273	96	21	1	0	0	0	1317
%	30.8	39.6	20.7	7.3	1.6	0.1	0.0	0.0	0.0	

Statistics for those entered for 5 or more GCSE's

	5+ A*	10+ A*/A	9+ A*/A	8+ A*/A	7+ A*/A	7+ A*-C	5+ A*-C	5+ A*-G	total
all pupils	52	56	84	112	132	243	250	251	251
%	20.7	22.3	33.5	44.6	52.6	96.8	99.6	100.0	
no of boys	19	18	25	35	44	112	118	119	119
%	16.0	15.1	21.0	29.4	37.0	94.1	99.2	100.0	47.4
no. of girls	33	38	59	77	88	131	132	132	132
%	25.0	28.8	44.7	58.3	66.7	99.2	100.0	100.0	52.6

Statistics for those entered for 1 or more GCSE's

	1+ A*-C	1+ A*-G	entries	average points per pupil
all pupils	252	252	252	130.8
%	100.0	100.0		
no of boys	119	119	119	124.3
%	100.0	100.0		
no of girls	133	133	133	136.7
%	100.0	100.0		

Cohort	252	100%
5 A*- B	223	88.5% (+1.4%)
5 A* - B (incl English & Maths)	206	81.7%
7 A*- B	201	79.8% (+3.5%)
7 A* - B (incl English and Maths)	189	75%

Provisional Distribution of Form 5 GCSE Grades by Subject for 2018

	A*	A	B	C	D	E	F	G	U	entriesA+ C	Average score	av. Score in all subjects
Art & Design %	5 18.5	8 29.6	8 29.6	5 18.5	1 3.7	0 0.0	0 0.0	0 0.0	0 0.0	27 96.3	48.44	49.76
Biology %	44 21.0	77 36.7	54 25.7	26 12.4	9 4.3	0 0.0	0 0.0	0 0.0	0 0.0	210 95.7	49.46	50.21
Business Studies %	4 8.7	18 39.1	7 15.2	15 32.6	2 4.3	0 0.0	0 0.0	0 0.0	0 0.0	46 95.7	46.91	46.64
Chemistry %	43 21.1	80 39.2	54 26.5	15 7.4	9 4.4	3 1.5	0 0.0	0 0.0	0 0.0	204 94.1	49.65	50.67
Class. Civilisation %	2 7.4	4 14.8	6 22.2	12 44.4	2 7.4	1 3.7	0 0.0	0 0.0	0 0.0	27 88.9	43.56	47.86
Computer Science %	6 18.8	10 31.3	8 25.0	5 15.6	2 6.3	0 0.0	0 0.0	1 3.1	0 0.0	32 90.6	47.50	49.45
Design and Tech. %	7 11.9	20 33.9	19 32.2	10 16.9	1 1.7	1 1.7	1 1.7	0 0.0	0 0.0	59 94.9	47.53	47.42
Economics %	6 50.0	5 41.7	1 8.3	0 0.0	0 0.0	0 0.0	0 0.0	0 0.0	0 0.0	12 100.0	54.50	52.45
English Language %	34 13.5	94 37.3	96 38.1	28 11.1	0 0.0	0 0.0	0 0.0	0 0.0	0 0.0	252 100.0	49.19	49.94
English Literature %	59 23.5	101 40.2	65 25.9	26 10.4	0 0.0	0 0.0	0 0.0	0 0.0	0 0.0	251 100.0	50.61	49.95
French %	12 18.8	19 29.7	13 20.3	12 18.8	7 10.9	1 1.6	0 0.0	0 0.0	0 0.0	64 87.5	47.31	50.74
Geography %	12 12.6	43 45.3	16 16.8	14 14.7	9 9.5	1 1.1	0 0.0	0 0.0	0 0.0	95 89.5	48.02	49.90
Geology %	4 21.1	1 5.3	9 47.4	5 26.3	0 0.0	0 0.0	0 0.0	0 0.0	0 0.0	19 100.0	47.26	47.37
German %	5 10.4	9 18.8	5 10.4	20 41.7	6 12.5	2 4.2	0 0.0	0 0.0	1 2.1	48 81.3	42.67	49.61
History %	17 22.7	28 37.3	15 20.0	12 16.0	3 4.0	0 0.0	0 0.0	0 0.0	0 0.0	75 96.0	49.52	48.01
Home Economics %	2 8.7	14 60.9	5 21.7	2 8.7	0 0.0	0 0.0	0 0.0	0 0.0	0 0.0	23 100.0	50.17	51.26
Information Tech %	1 5.3	3 15.8	10 52.6	4 21.1	1 5.3	0 0.0	0 0.0	0 0.0	0 0.0	19 94.7	45.68	46.95
IT/Art %	0 0.0	2 20.0	5 50.0	3 30.0	0 0.0	0 0.0	0 0.0	0 0.0	0 0.0	10 100.0	45.40	44.65
Latin %	24 46.2	14 26.9	5 9.6	6 11.5	1 1.9	2 3.8	0 0.0	0 0.0	0 0.0	52 94.2	51.54	52.29
Mathematics %	119 47.2	52 20.6	61 24.2	20 7.9	0 0.0	0 0.0	0 0.0	0 0.0	0 0.0	252 100.0	52.43	49.94
Maths Further %	64 59.3	30 27.8	11 10.2	3 2.8	0 0.0	0 0.0	0 0.0	0 0.0	0 0.0	108 100.0	54.61	53.08
Music %	10 50.0	9 45.0	1 5.0	0 0.0	0 0.0	0 0.0	0 0.0	0 0.0	0 0.0	20 100.0	54.70	51.34
PE %	7 38.9	8 44.4	3 16.7	0 0.0	0 0.0	0 0.0	0 0.0	0 0.0	0 0.0	18 100.0	53.33	48.58
Performing Arts %	17 51.5	15 45.5	1 3.0	0 0.0	0 0.0	0 0.0	0 0.0	0 0.0	0 0.0	33 100.0	54.91	48.88
Physics %	49 26.6	69 37.5	49 26.6	14 7.6	3 1.6	0 0.0	0 0.0	0 0.0	0 0.0	184 98.4	50.79	51.16
Religious Studies %	63 26.0	105 43.4	50 20.7	21 8.7	2 0.8	0 0.0	1 0.4	0 0.0	0 0.0	242 98.8	51.01	49.98
Russian %	4 26.7	4 26.7	6 40.0	1 6.7	0 0.0	0 0.0	0 0.0	0 0.0	0 0.0	15 100.0	50.40	50.39
Spanish %	5 6.3	27 34.2	12 15.2	28 35.4	6 7.6	1 1.3	0 0.0	0 0.0	0 0.0	79 91.1	45.54	48.98
Total %	625 25.2	869 35.1	595 24.0	307 12.4	64 2.6	12 0.5	2 0.1	1 0.0	1 0.0	2476 96.8	49.94	

Let Methody Flourish: Improving Outcomes For All in a Changing Educational and Employment Landscape

	Development Areas	Y2 2018-19	Y3 2019-20
P Positive Emotions	Well-being: Pupils	Developing Coping strategies	Developing Coping strategies
	Well-being: Staff	Review of practices and procedures CPD	Review of practices and procedures CPD
E Engagement. Finding the Flow.	Raising standards of core academic skills	Literacy	
		ICT and Digital Skills	ICT and Digital Skills
		Numeracy	Numeracy
		Independent Learning	Collaborative Learning
			Homework
	Raising achievement by meeting the needs of all learners	SEN and Learning Support review	SEN review Learning Support
		Curriculum Provision	Curriculum Provision
		Differentiation	
Improving the learning environment	Capital Development	Capital Development	
	Classrooms, corridors and community spaces	Classrooms, corridors and community spaces	
R Relationships. Authentic connections.	Parental Engagement		
		Reporting: Written and verbal	
		Message and means	Message and means
	Character Development	Positive behaviour	Positive behaviour
	Inclusion and equality	Anti-bullying	
M Meaning. Purposeful existence.	Life Skills: defining and developing	LLW	LLW
		Global Citizenship	Global Citizenship
		Community Engagement	Enrichment
A Achievement. Sense of accomplishment.	Academic Outcomes	Subject Reform	
	Self-Awareness	Tracking and data	Target setting
		Mentoring	
			Review of self-evaluation
	Extra-curricular		
	Involvement	Involvement	